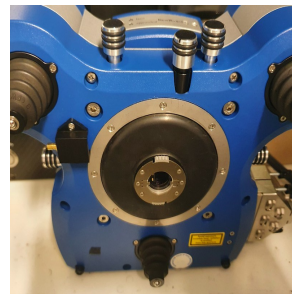
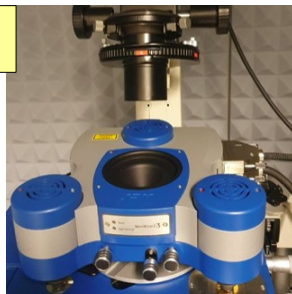
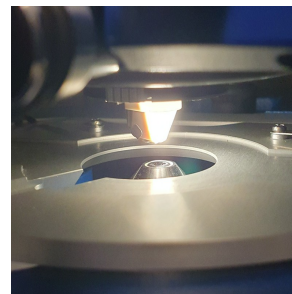
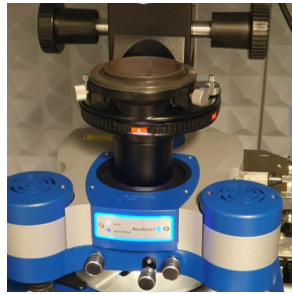


# JPK, work flow

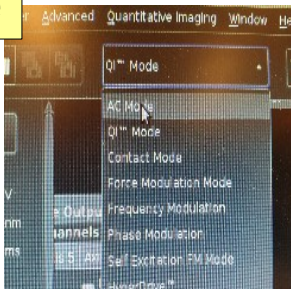
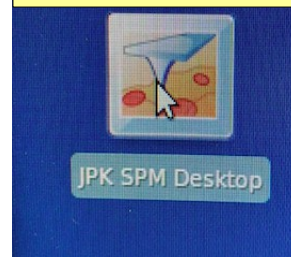
## Start the system and prepare for loading the tip



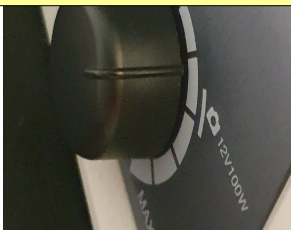
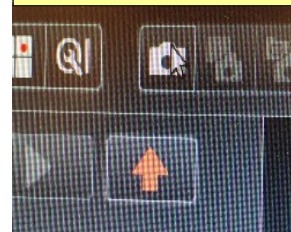
## Load and focus on AFM tip



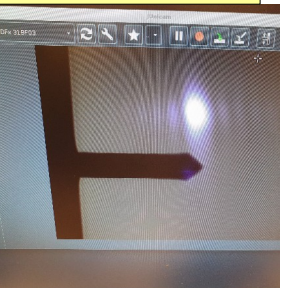
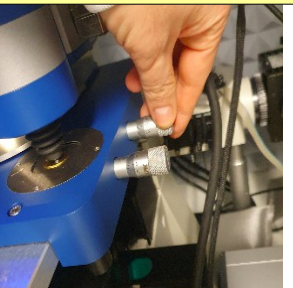
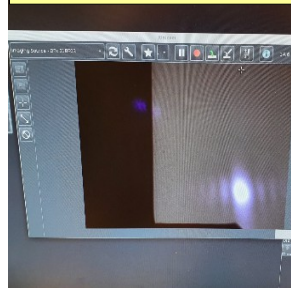
## Start software and select mode



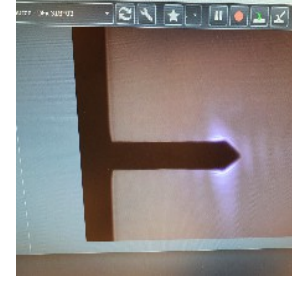
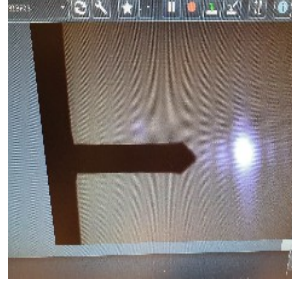
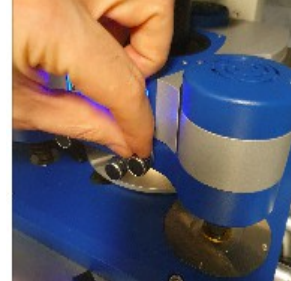
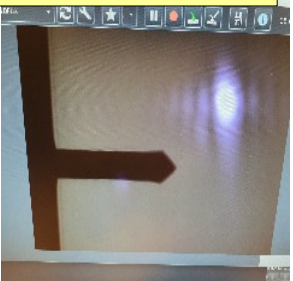
## Start camera, adjust light and focus to see the laser spot



## Center the cantilever to camera field of view

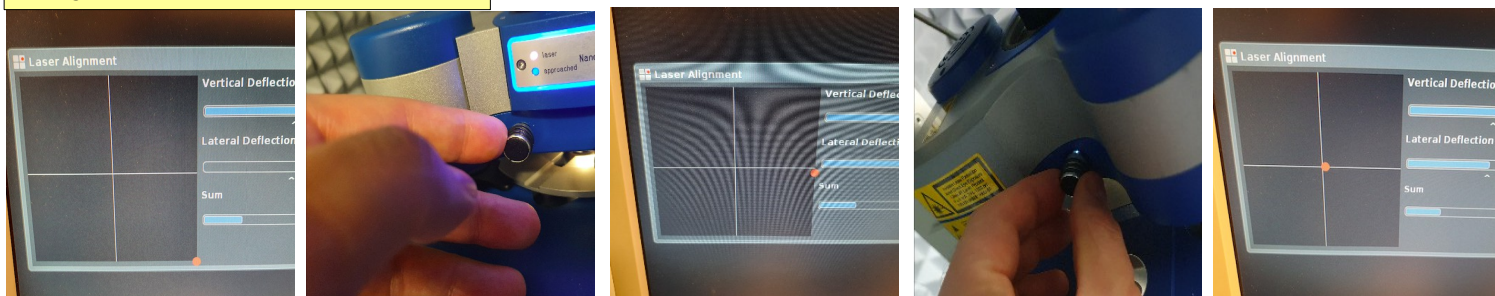


## Adjust laser on the cantilever

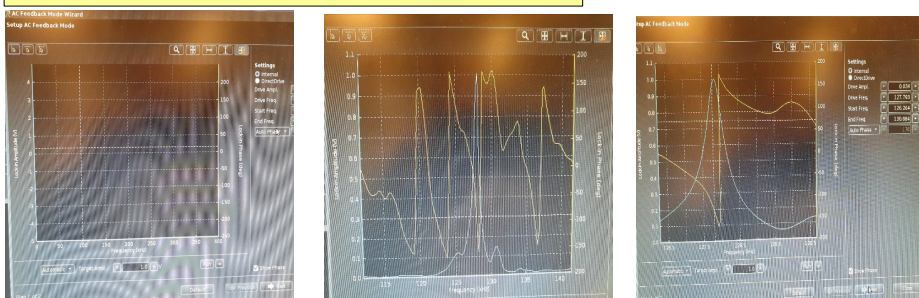




## Adjust laser on detector



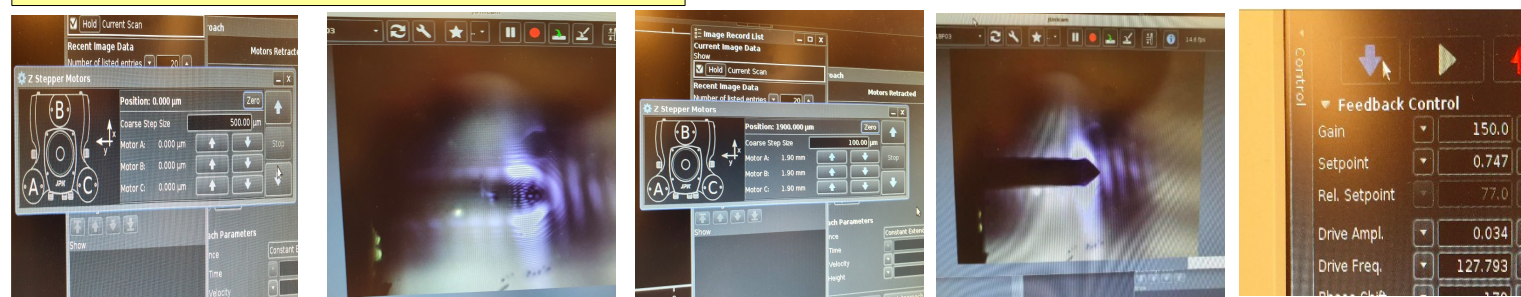
## Find frequency of resonance



## Load sample and focus



## Approach tip manually and engage



## Scan, adjust parameters and save

